

ART-INSPIRED SCAVENGER HUNT!

How many things can you find in our scavenger hunt? Inspired by artworks from the ICA's collection, we invite you to look around your space, out your window, or during a socially-distanced neighborhood walk with your family. Document what you find by sketching or taking a photo.



Someone with their pet
Sanya Kantarovsky, *Violet*, 2016



An article of patterned clothing
Roe Ethridge, *Holly at Marlow and Sons*, 2006



Something that reminds
you of home
Mark Dion, *New Bedford Cabinet*, 2001



Something that makes a sound
Nick Cave, *Soundsuit*, 2009



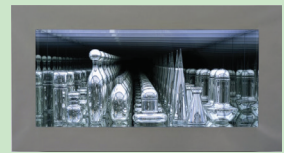
Something flying through the sky
Trevor Paglen, *Untitled (Reaper Drone)*, 2012



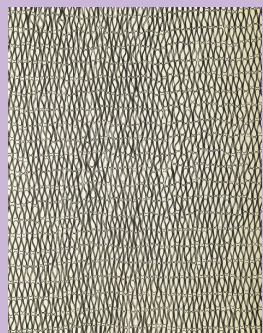
An interesting shadow
Lucy McKenzie, *Untitled*, 2004



Text on an unexpected surface
Kerry James Marshall, *Untitled*, 1998



A reflection
Josiah McElheny, *Czech Modernism
Mirrored and Reflected Infinitely*, 2005



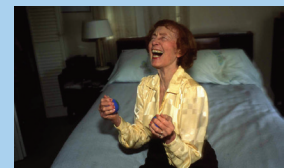
An ordinary object used/found
in a surprising way
Tara Donovan, *Untitled (Rubber Bands)*, 2006



Something protective
Faith Wilding, *Crocheted Environment*,
1972/1995



Something that reminds
you of childhood
Rineke Dijkstra, *Odessa, Ukraine,
August 11, 1993, 1993*



Something that makes you smile
Nan Goldin, *Lil Laughing*,
Swampscott, MA, 1996

SHARE YOUR FAVORITE ON SOCIAL MEDIA
WITH #ICAARTLAB OR EMAIL FAMILYPROGRAMS@ICABOSTON.ORG

ICA

CREDITS FROM TOP LEFT TO RIGHT:

Sanya Kantarovsky, *Violet*, 2016. Oil on linen, 50 × 40 inches (127 × 101.6 cm). Promised gift of Karen Swett Conway and Brian Conway. Courtesy the artist and Stuart Shaw Modern Art. © Sanya Kantarovsky

Roe Ethridge, *Holly at Marlow and Sons*, 2005. Chromogenic color print, 30 × 24 inches (76.2 × 61 cm). Promised gift of Beth and Richard Marcus. © Roe Ethridge

Mark Dion, *New Bedford Cabinet*, 2001. Wooden and glass cabinet and dig finds, 104 × 74 × 19 inches (264.2 × 188 × 48.3 cm). General Acquisition Fund. Courtesy the artist and Tanya Bonakdar Gallery, New York/Los Angeles. © Mark Dion

Nick Cave, *Soundsuit*, 2009. Mixed media, 97 × 26 × 20 inches (246.4 × 66 × 50.8 cm). Gift of Steve Corkin and Dan Maddalena. Photo by James Prinz Photography. Courtesy the artist and Jack Shainman Gallery, New York. © Nick Cave

Trevor Paglen, *Untitled (Reaper Drone)*, 2012. Chromogenic color print, 49 × 61 inches (124.5 × 154.9 cm). Promised gift of Abigail and Mark Goodman. Courtesy the artist. © Trevor Paglen

Lucy McKenzie, *Untitled*, 2004. Oil on canvas, 96 × 72 inches (243.8 × 182.9 cm). Gift of David Teiger. Courtesy the artist. © Lucy McKenzie

Kerry James Marshall, *Untitled*, 1998. Ceramic, Five parts, each: 12 1/4 inches (31.1 cm) (diameter). Gift of The Dale A. Roberts Collection. Courtesy the artist and David Zwirner, New York/London/Hong Kong. Photo by Charles Mayer Photography. © Kerry James Marshall

Josiah McElheny, *Czech Modernism Mirrored and Reflected Infinitely*, 2005. Mirrored glass case with hand-blown mirrored glass objects, 18 1/2 × 56 1/2 × 30 1/2 inches (47 × 143.5 × 77.5 cm). Acquired through funds provided by Bridgitt and Bruce Evans, Kimberly and James Pallotta, Beth and Anthony Terrana, and Nancy B. Tieken, in honor of Jill Medvedow. Courtesy the artist. © Josiah McElheny

Tara Donovan, *Untitled (Rubber Bands)*, 2006. Relief print from rubber band matrix, 36 1/2 × 24 3/4 inches (92.7 × 62.9 cm). Gift of Bruce A. Beal and Robert L. Beal, in honor of Barbara Krakow. Courtesy the artist. © Tara Donovan

Faith Wilding, *Crocheted Environment, 1972/1995*. Woolworth's Sweetheart acrylic yarn and sisal rope, 108 × 108 × 108 inches (274.3 × 274.3 × 274.3 cm). Gift of the artist. Photo by Charles Mayer Photography. © Faith Wilding

Rineke Dijkstra, *Odessa, Ukraine, August 11, 1993, 1993*. Chromogenic color print, 59 × 49 5/8 inches (149.9 × 126 cm). Gift of Beth and Anthony Terrana. Courtesy the artist and Marian Goodman Gallery. © Rineke Dijkstra

Nan Goldin, *Lil Laughing, Swampscott, MA*, 1996. Silver dye bleach print (Cibachrome), 11 × 14 inches (27.9 × 35.6 cm). Gift of Lillian and Hyman Goldin. Courtesy Matthew Marks Gallery, New York. © Nan Goldin